



## **MEDIA ADVISORY**

**Date:** Friday, December 12, 2014

### **Media Contact**

Robyn Geist  
Outreach and Development Director  
Summit Land Conservancy  
435-649-9884 or 801-680-1135  
robyn@wesaveland.org

# **PARK CITY AND SUMMIT LAND CONSERVANCY TO CELEBRATE COMPLETION OF GAMBEL OAK PROJECT WITH A SIGNING EVENT ON DECEMBER 12**

*225-acre project preserves open space and public recreation access;  
Park City will maintain ownership of the land while Summit Land  
Conservancy will hold and enforce the conservation easement*



*Photo credit: Eric Erlenbusch, ericephoto.com*

**WHAT**

Park City Municipal and Summit Land Conservancy will be formalizing the permanent protection of the 225-acre Gambel Oak open space project with a signing event. Representatives from the City and Conservancy will be signing the conservation easement paperwork and key project supporters will be in attendance at the celebration.

**WHEN**

Friday, December 12, 3:30 p.m.

**WHERE**

Marsac Executive Conference Room  
445 Marsac Ave  
Park City

**WHY**

Unlike other Western resort communities that are surrounded by public lands, Park City is bordered by private land that is imminently developable. The citizens and leaders of Park City recognize how important open spaces are to the area's economy and its citizens' quality of life. A conservation easement is the best tool available to permanently preserve the lands that offer the scenic views and outdoor activities that draw residents and visitors alike to Summit County.



*Photo credit: Eric Erlenbusch, ericephoto.com*

The Gambel Oak project was made possible through a public-private partnership between the City, neighbors and the community. All joined in to raise the funds necessary to ensure the permanent protection of the 225-acre project. The project preserves view sheds, moose and

other wildlife habitat, and public recreation access. The Gambel Oak, Solamere Connector, April Mountain and Masonic trails pass through this city-owned open space.

Other City-owned open spaces for which the Conservancy holds conservation easements include: McPolin Farmlands, Round Valley, Risner Ridge, Quarry Mountain, Richard's Ranch, Virginia Mining Claims, UP&L, Rail Trail, and Miss Billie's. The Quarry Mountain property is jointly owned with Summit County.

## **WHO**

### ***Park City Municipal***

Mayor Jack Thomas

Diane Foster, City Manager

Heinrich Deters, Trails and Open Space Manager

Citizens Open Space Advisory Committee (COSAC) representatives

### ***Summit Land Conservancy***

Cheryl Fox, Executive Director

Kate Sattelmeier, Stewardship Director and Legal Counsel

Board Members

### ***Key Project Supporters***

Neighbors and community members

## **INTERVIEW AND PHOTO OPPS**

Representatives from the City and Summit Land Conservancy and key project supporters will be available for interviews to discuss the Gambel Oak project and the importance of local open space in the community. Photo opps include City and Conservancy representatives signing the conservation easement paperwork and supporters raising glasses of bubbly to toast open space.

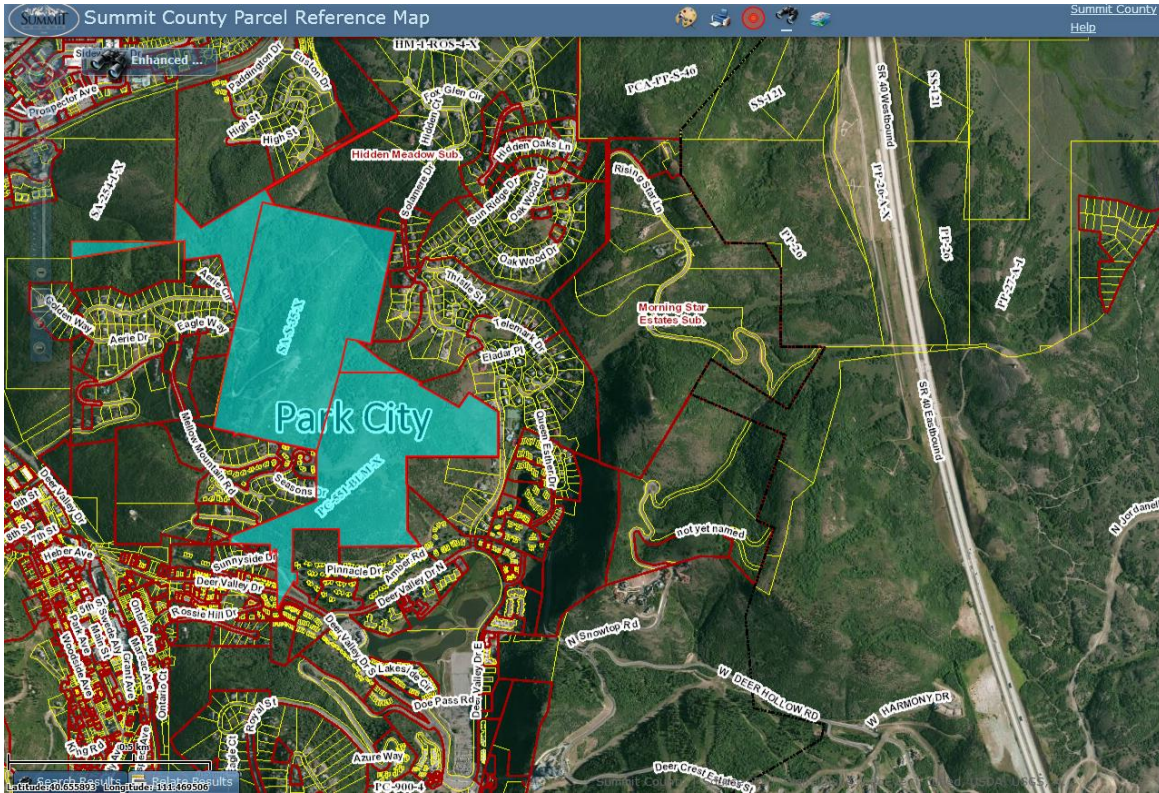
Photos available upon request; please email [robyn@wesaveland.org](mailto:robyn@wesaveland.org). Or credit Eric Erlenbusch, ericephoto.com, if using attached images.

## **ABOUT THE GAMBEL OAK PROJECT**

The 225-acre City-owned Gambel Oak property was acquired over several years from an Open Space bond purchase in 2005 and a conveyance from the Bureau of Land Management (BLM) in 2009 upon the suggestions of the Citizens Open Space Advisory Committee (COSAC).

Before the BLM conveyance in 2009, the U.S. Government considered building a large hotel on the property. Other possible uses of the land could have included a tubing park, a small scale golfing facility or snowmobiling access. The City and community felt these uses would be better suited to other locations and pursued the permanent protection of the property.





## ABOUT SUMMIT LAND CONSERVANCY

The Summit Land Conservancy saves land. Since 2002, its work has benefited Summit County residents and visitors by enhancing lives, sustaining communities and safeguarding legacies. People see the results of the Conservancy's work when they walk their dogs in Round Valley, hike or bike the Mid-Mountain Trail, stroll past the McPolin Farmlands, ski the Empire Canyon and Lady Morgan areas at Deer Valley Resort, fly fish the Weber River, or drive past the generations-old farm and ranch lands in Eastern Summit County. The first land trust in Utah to be accredited by the Land Trust Accreditation Commission, the Summit Land Conservancy protects 25 properties covering nearly 2,700 acres of open space and is currently working to preserve an additional 2,200 acres of land.

Launched in 2009, the Conservancy's Weber River Watershed Initiative aims to work with willing landowners to preserve land along the Weber and its tributaries from development. This work ensures that current and future generations will have clean water—the Weber Basin supplies drinking and irrigation water to 21 percent of Utah's population, approximately 600,000 people. The open spaces and sustainably managed farm and ranch lands protected by the Conservancy also filter water, absorb and store seasonal runoff, help to mitigate flooding from major weather events, store CO<sub>2</sub> and provide critical habitat for a multitude of wildlife species.

For more information, visit us at our website ([wesaveland.org](http://wesaveland.org)) or on Facebook ([facebook.com/WeSaveLand](https://facebook.com/WeSaveLand)) and Instagram ([instagram.com/wesaveland](https://instagram.com/wesaveland)) or follow us on Twitter @Summit\_Land ([twitter.com/summit\\_land](https://twitter.com/summit_land)).

###